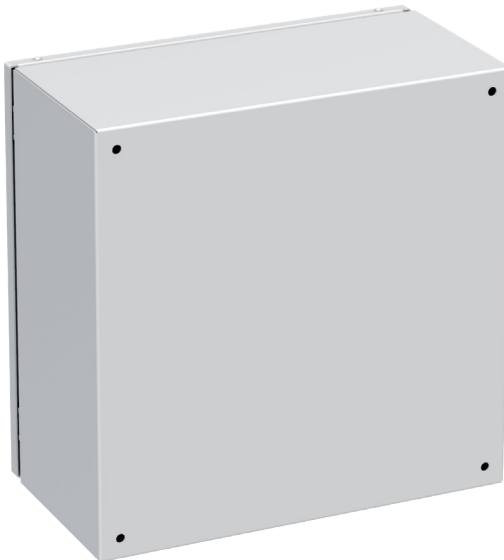


**SWN Wall-Mounted Cabinet, 400 x 400 x 210 mm**

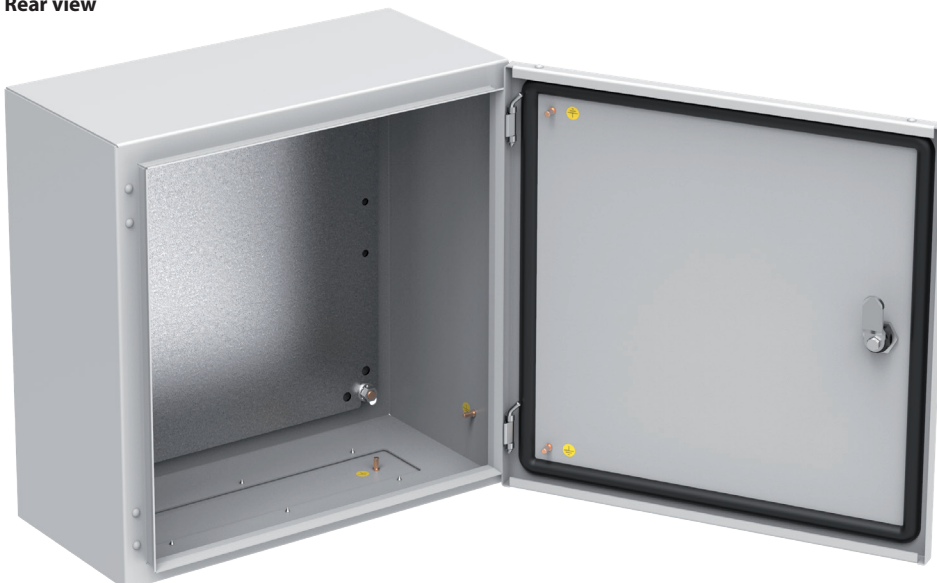
Catalogue number: W-SWN-404021-01-011

**ZPAS**

Front view



Rear view



Compact wall-mounted cabinet for installation of electrical equipment to be protected against unauthorized access, dust and moisture.

Intended for indoor use.

**CABINET DESIGN**

- Tightly welded cabinet body.
- Opening for the gland plate in the bottom of the body.
- A groove around the door opening to prevent dirt and water entering the cabinet.
- Door with cast gasket, lockable by one single-point lock with double-bit insert.
- Mounting plate fixed to the rear side of the cabinet.
- Gland plate (blanking plate) with cast gasket, fixed with screws.
- On the rear side of the cabinet holes for fixing the cabinet directly to the wall or using hanging brackets.
- The cabinet body, door and gland plate with earthing studs.
- Holes for fixing the earthing strip in the mounting plate.
- Easy change of door opening direction
- Maximum door opening angle: 120°.

**TECHNICAL DATA****Material and surface finish**

Body, door, gland plate: carbon steel sheet, powder paint in light grey (RAL 7035).

Mounting plate: Al-Zn-coated sheet steel.

**Protection degree**

IP 65 in accordance with EN 60529.

**Dimensions**

Height 400 mm, width 400 mm, depth 210 mm.

**SWN Wall-Mounted Cabinet, 400 x 400 x 210 mm**

Catalogue number: W-SWN-404021-01-011

**ZPAS**