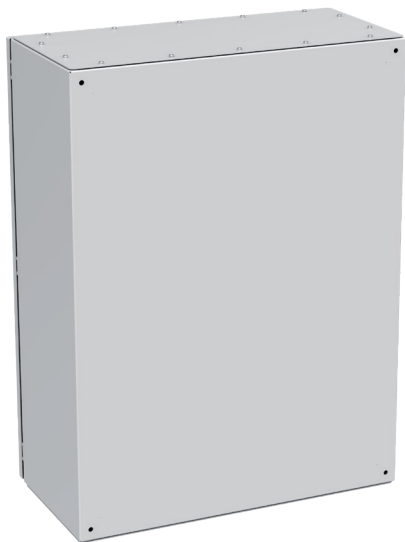
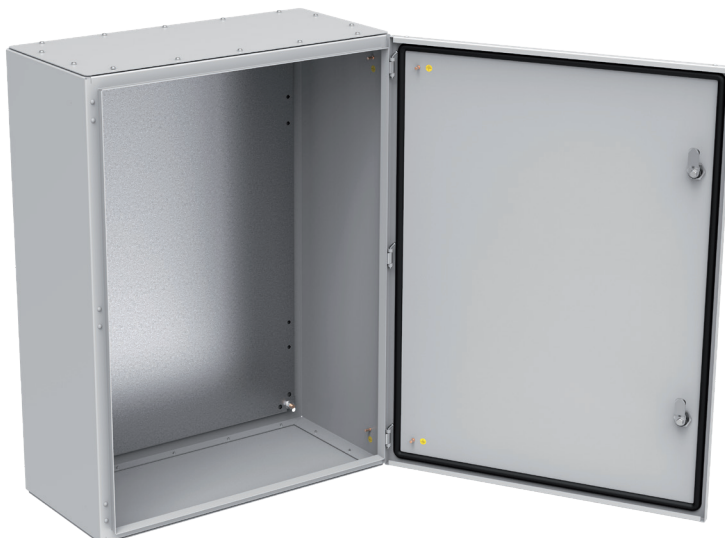


SWN Wall-Mounted Cabinet, 800 x 600 x 300 mm

Catalogue number: W-SWN-806030-01-011

ZPAS**Front view****Rear view**

Compact wall-mounted cabinet for installation of electrical equipment to be protected against unauthorized access, dust and moisture. Intended for indoor use.

CABINET DESIGN

- Tightly welded cabinet body.
- Openings for the gland plate in the bottom and top of the body.
- A groove around the door opening to prevent dirt and water entering the cabinet.
- Door with cast gasket, lockable by two single-point locks with double-bit insert.
- Mounting plate fixed to the rear side of the cabinet.
- Gland plates (blanking plates) with cast gasket, fixed with screws.
- On the rear side of the cabinet holes for fixing the cabinet directly to the wall or using hanging brackets.
- The cabinet body, door and gland plates with earthing studs.
- Holes for fixing the earthing strip in the mounting plate.
- Easy change of door opening direction
- Maximum door opening angle: 120°.

TECHNICAL DATA**Material and surface finish**

Body, door, gland plates: carbon steel sheet, powder paint in light grey (RAL 7035).

Mounting plate: Al-Zn-coated sheet steel.

Protection degree

IP 65 in accordance with EN 60529.

Dimensions

Height 800 mm, width 600 mm, depth 300 mm.

SWN Wall-Mounted Cabinet, 800 x 600 x 300 mm

Catalogue number: W-SWN-806030-01-011

ZPAS