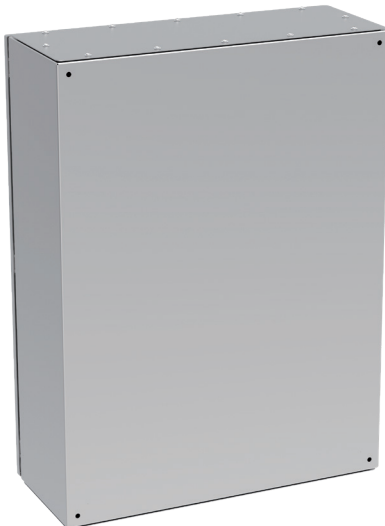
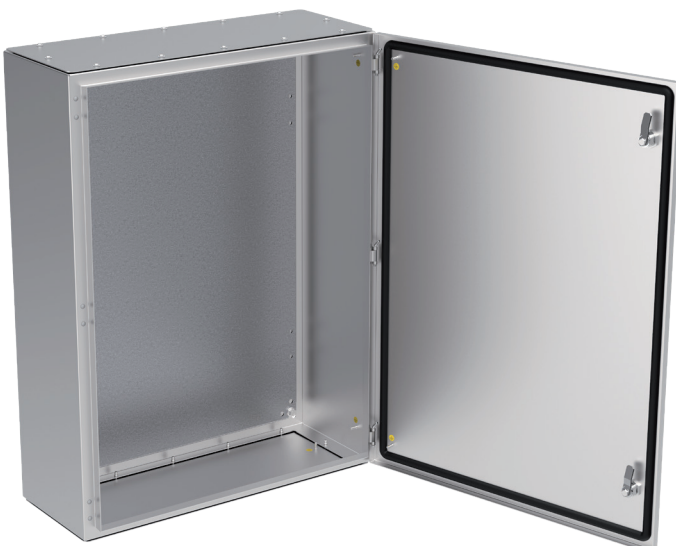


**SWN Inox Wall-Mounted Cabinet, 800 x 600 x 250 mm**

Catalogue number: W-SWN-806025-N1-000

**ZPAS****Front view****Rear view**

Compact wall-mounted cabinet for installation of electrical equipment to be protected against unauthorized access, dust and moisture. Intended for use in outdoor conditions in corrosion-aggressive environment or wherever extra hygiene is required.

**CABINET DESIGN**

- Tightly welded cabinet body.
- Openings for the gland plate in the bottom and top of the body.
- A groove around the door opening to prevent dirt and water entering the cabinet.
- Door with cast gasket, lockable by two single-point locks with double-bit insert.
- Mounting plate fixed to the rear side of the cabinet.
- Gland plates (blanking plates) with cast gasket, fixed with screws.
- On the rear side of the cabinet holes for fixing the cabinet directly to the wall or using hanging brackets.
- The cabinet body, door and gland plates with earthing studs.
- Holes for fixing the earthing strip in the mounting plate.
- Easy change of door opening direction.
- Maximum door opening angle: 120°.

**TECHNICAL DATA****Material and surface finish**

Body, door, gland plates: AISI 304 stainless steel sheet with grinded surface structure, reconstructed structure from the outside after weld treatment, structure crossing only where this cannot be avoided. Welds and pressure welds cleaned from chips from the inside, etched by submersion (inside and outside), possible slight discolouration only where welded.

Mounting plate: Al-Zn-coated sheet steel.

**Protection degree**

IP 65 in accordance with EN 60529.

**Dimensions**

Height 800 mm, width 600 mm, depth 250 mm.

**SWN Inox Wall-Mounted Cabinet, 800 x 600 x 250 mm**  
Catalogue number: W-SWN-806025-N1-000



