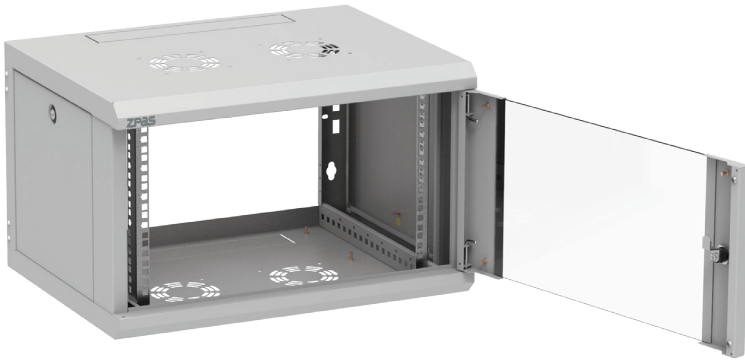


Wall-mounted network cabinet Z-CUBE 450, 6 U, glass door

Catalogue number: W-ZCUBE-6045-06S-011

ZPAS**MULTIFUNCTIONALITY**

- Designed for indoor applications.
- The design of the cabinet is based on a welded body, glass front door and two removable side panels.
- The cabinet is equipped with two adjustable 19" mounting angles with depth regulation.
- Top and bottom plates have cable openings covered with knock-out blanking plates and venting grids with holes for fan assembling.
- Door and side panels can be installed without tools.
- It is possible to change door opening direction.
- Body, door and side panels are equipped with earthing pins.

TECHNICAL DATA**Material**

Sheet steel, clear mineral safety glass.

Protection degree

IP 20 in accordance with EN 60529 (if the cabinet is mounted on the solid flat wall or equipped with rear panel).

Surface finishing

Body, side panels, side elements of glass door – powder paint, light grey (RAL 7035). Mounting angles – Al-Zn coated.

Maximum load capacity

60 kg

Dimensions

Height: 6 U (368 mm)

With: 600 mm

Depth: 450 mm

Wall-mounted network cabinet Z-CUBE 450, 6 U, glass door

Catalogue number: W-ZCUBE-6045-06S-011

ZPAS