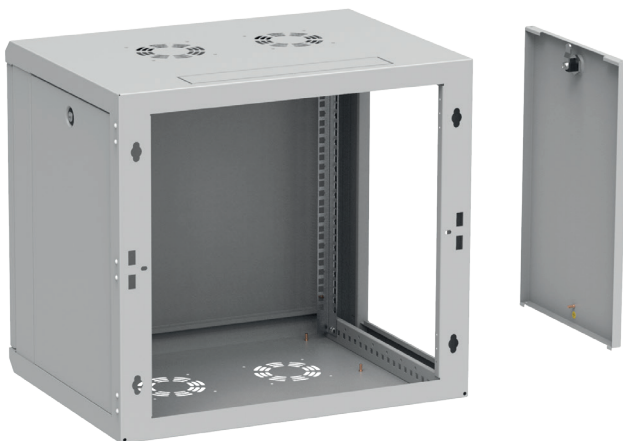


**Wall-mounted network cabinet Z-CUBE 450, 10 U, metal door**

Catalogue number: W-ZCUBE-6045-10M-011

**ZPAS****MULTIFUNCTIONALITY**

- Designed for indoor applications.
- The design of the cabinet is based on a welded body, metal front door and two removable side panels.
- The cabinet is equipped with two adjustable 19" mounting angles with depth regulation.
- Top and bottom plates have cable openings covered with knock-out blanking plates and venting grids with holes for fan assembling.
- Door and side panels can be installed without tools.
- It is possible to change door opening direction.
- Body, door and side panels are equipped with earthing pins.

**TECHNICAL DATA****Material**

Sheet steel.

**Protection degree**

IP 20 in accordance with EN 60529 (if the cabinet is mounted on the solid flat wall or equipped with rear panel).

**Surface finishing**

Body, side panels, door – powder paint, light grey (RAL 7035). Mounting angles – Al-Zn coated.

**Maximum load capacity**

60 kg

**Dimensions**

Height: 10 U (546 mm)

With: 600 mm

Depth: 450 mm

**Wall-mounted network cabinet Z-CUBE 450, 10 U, metal door**

Catalogue number: W-ZCUBE-6045-10M-011

**ZPAS**